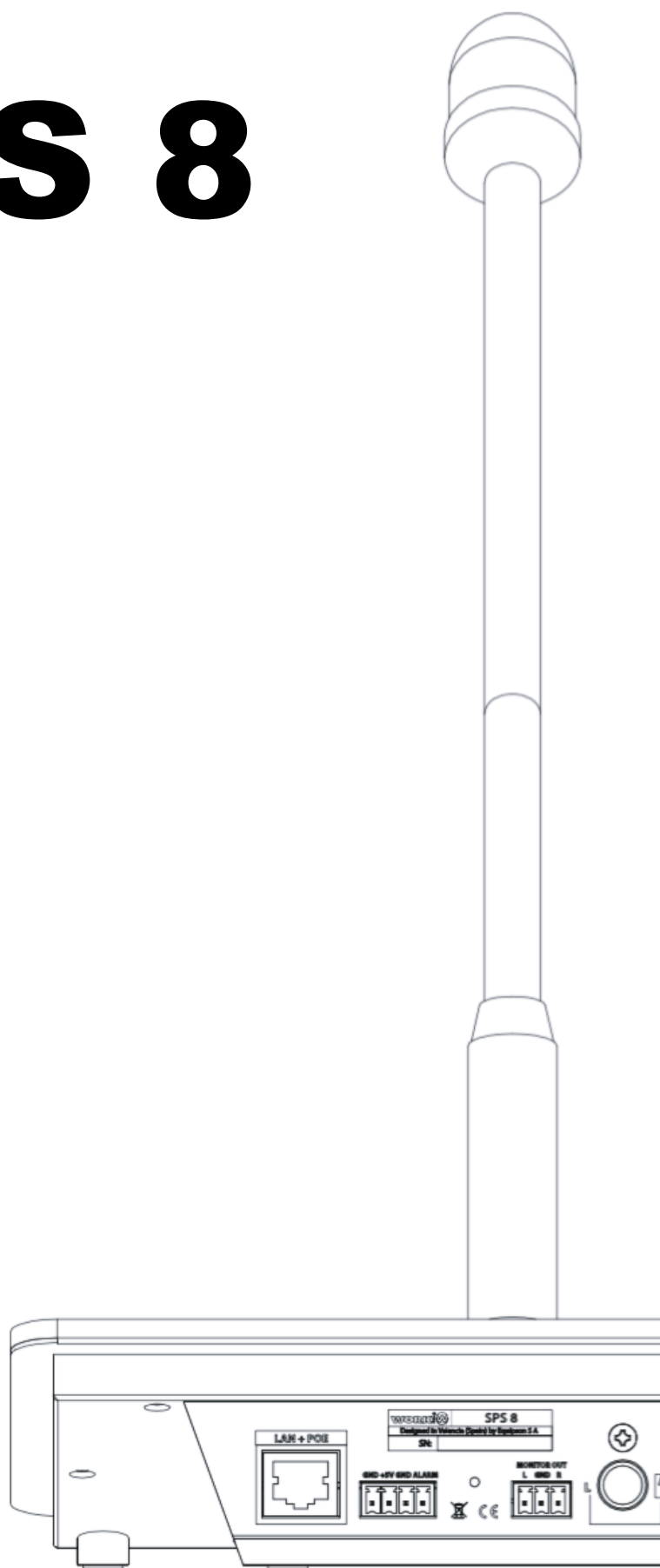


# SPS 8

**WORK<sup>PRO</sup> W**

**Paging Station**

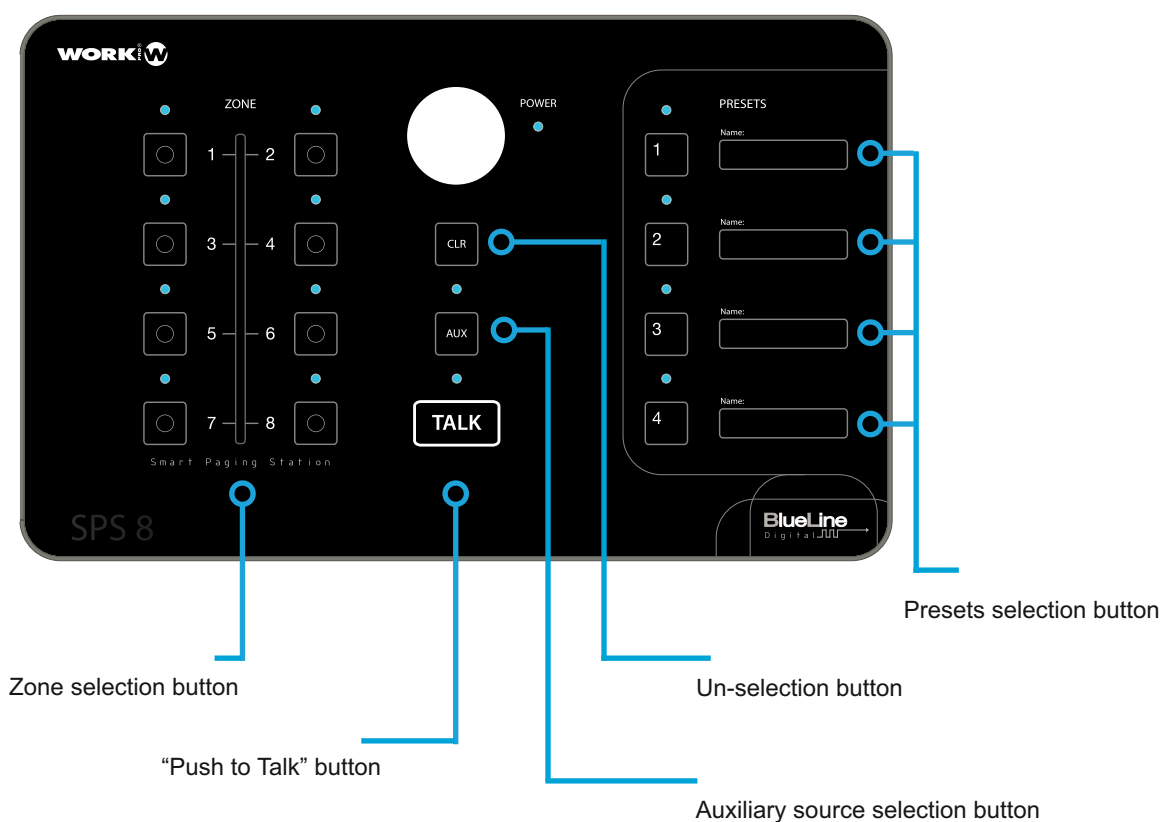
**USER MANUAL**



## General View

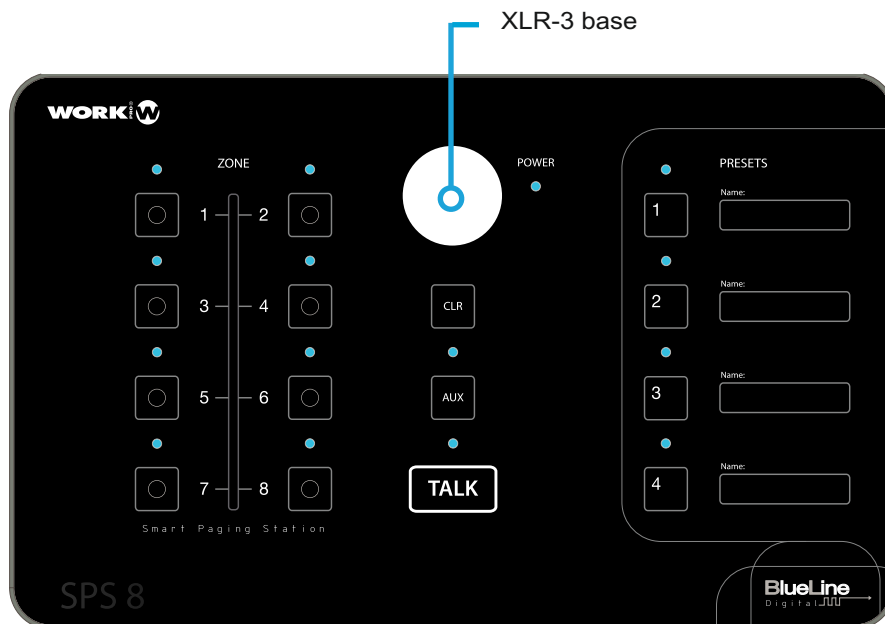
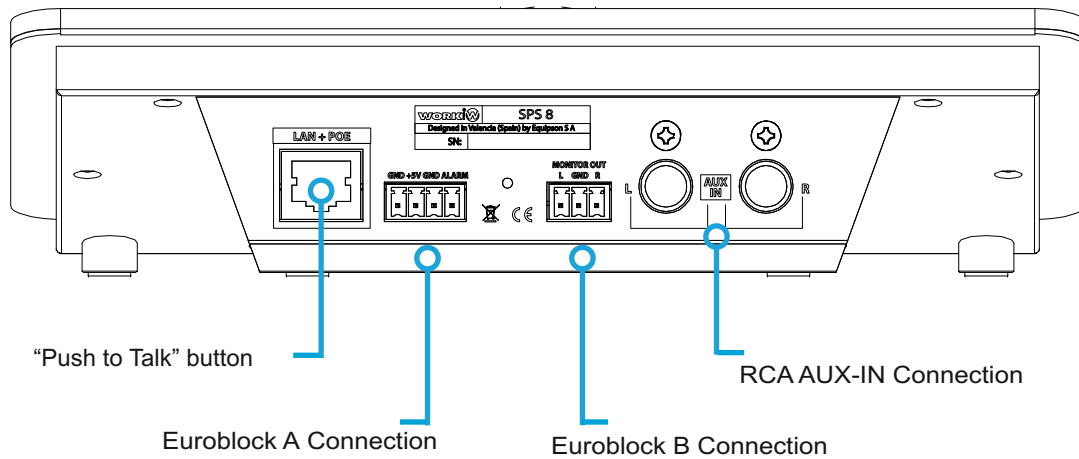
### SPS 8 (General view)

SPS 8 is a paging Station specifically designed for BlueLine Digital System, compatible also with Digiline Series. In this guide, we introduce you to the features and functionalities of the SPS 8



# 2

## CONNECTIONS



**Ethernet port:** for the connection of SPS 8 to the local network. It is compatible with PoE, therefore it can be supplied through the Ethernet port, avoiding the need of connecting it to an external power supply.

It must be taken under consideration that for the direct connection to a PC it is necessary to use a cross network cable (it is not necessary unless your System is compatible with Auto-MDIX).

**Euroblock A connection:** to connect the external power supply source (+5VDC) and the alarm System. It is usually an open contact. It can be programmed with one or several OSC commands that can be assigned to the alarm event.

**Euroblock B connection:** to connect to the the monitor audio output. The signal provided by this connection is the same that the one of the Ethernet. It is an unbalanced audio output.

**RCA connection:** to connect the audio source of the auxiliary input.

**XLR-3 base:** to connect a dynamic microphone to the SPS 8. If other type of microphone is used, it could damage the paging station.

## Buttons

All basic control functions are made through physic buttons placed in frontal panel of SPS 8.

### Zone selection buttons

These 8 multi-function programmable buttons are placed at the left hand of the control board. By default, each button is preset to work with a specific zone (from 1 to 8).

It is possible to program and assign the diferent advanced functions to each button through WorkCAD software:

1-It is possible to assign an OSC command or series of OSC to each one of the buttons in order to program one or several actions.

2-it is possible to assign one or several zones to a zone selection button, thus it can work as a multi-zone selection button.

Any action or command assigned to the zone selection button can be triggered when "TALK" is pressed.

### Push to Talk button

Placed on the low part of the central zone of the control board, when pressed every device which has been previously selected through the zone selection buttons, stop their emission to give preference to SPS 8 microphone. It is mandatory to keep it pressed when talking. Once the button is not pressed, every device go back to its previous state.

## Auxiliary audio input selection button

It is placed in the central area of the board. When pressed, it activates the auxiliary audio input in order to be able to select whether to use the microphone or the auxiliary audio. When the button is pressed for more than 5 seconds, the Station starts working in "AUX" mode, as a streamer which broadcasts seamless (no need to press the "TALK" button) the auxiliary audio input source connected to the RCA of the rear panel. In this mode, if the "TALK" button is pressed, the microphone will have priority over the auxiliary audio input, being capable of stopping the broadcast and activating the microphone until the button is released. When released, the Station goes back to its previous mode, which in this example is "AUX-IN".

In the case of a reset or shut down, its working mode keeps saved.

## Un-selection button

It is placed in the central area of the board, the "CLR" button, when pressed, any other activated zone button will be automatically deactivated.

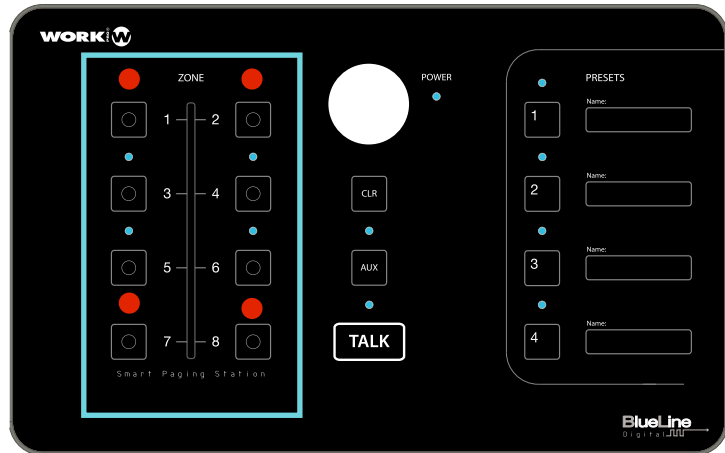
## Preset selection button

It is placed in the right hand of the board and is composed of 4 multi-function buttons that can be programmed. One of these buttons is set by default to activate the 8 zone selection buttons.

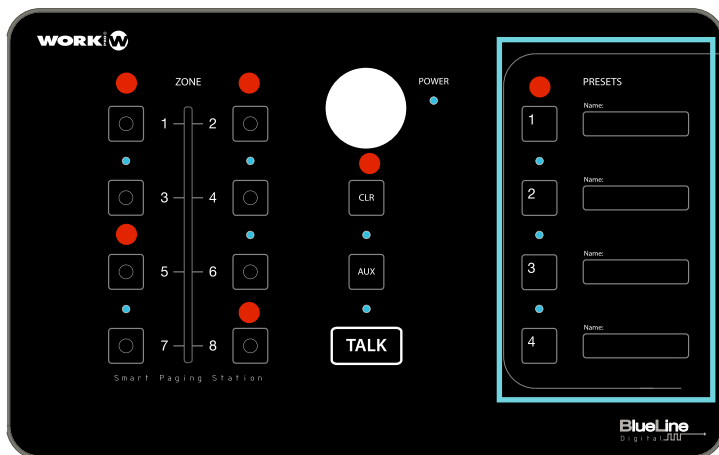
The program and function assignment for each button can be made in two different ways depending on the requirements:

- 1-Basic: To program a preset button to select several zones. For this, users have to select the zone that they want to use through the zone selection buttons from 1 to 8.

Once the zones have been selected, users have to keep pressed the "Clear" button while pressing the preset button (from 1 to 4) in which we want to save the configuration. SPS 8 will indicate us that the preset has been correctly recorded by turning off every state LED.



1-Select the zones



3. Press one time over the preset button (1 to 4)



2. Keep pressed the “Clear” button

**2-Advanced:** It is made through WorkCAD Software. It is possible to assign an OSC command or series of commands to each one of the buttons available in order to program one or more actions.

In the following updates, it will be possible to configure the buttons as “Push” (to work as a push button) or “Toggle” (to work as a switch). SPS 8’s preset buttons can be configured to interact with different components of an installation, from turning on and off the lighting to start an alarm or open a door.

# ADVANCED CONFIGURATION

# 4

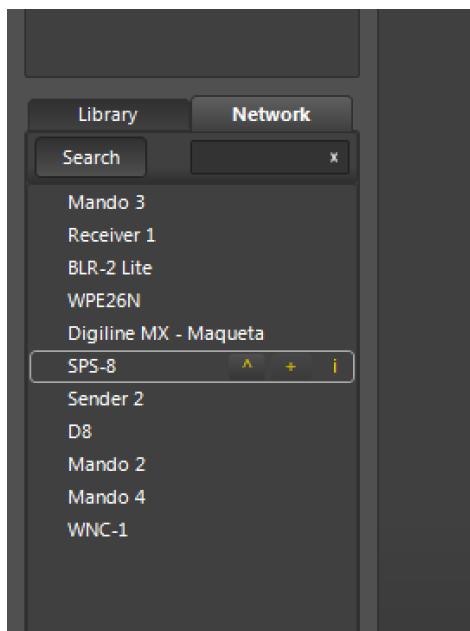
## Using WorkCAD

All advanced control functions must be made using WorkCAD software. It can be downloaded from our website.

[www.workproaudio.com](http://www.workproaudio.com) / [www.equipson.es](http://www.equipson.es)

## SPS 8 detection with WorkCAD

Start WorkCAD and select the “Network” tab to see the devices which are connected to the network.



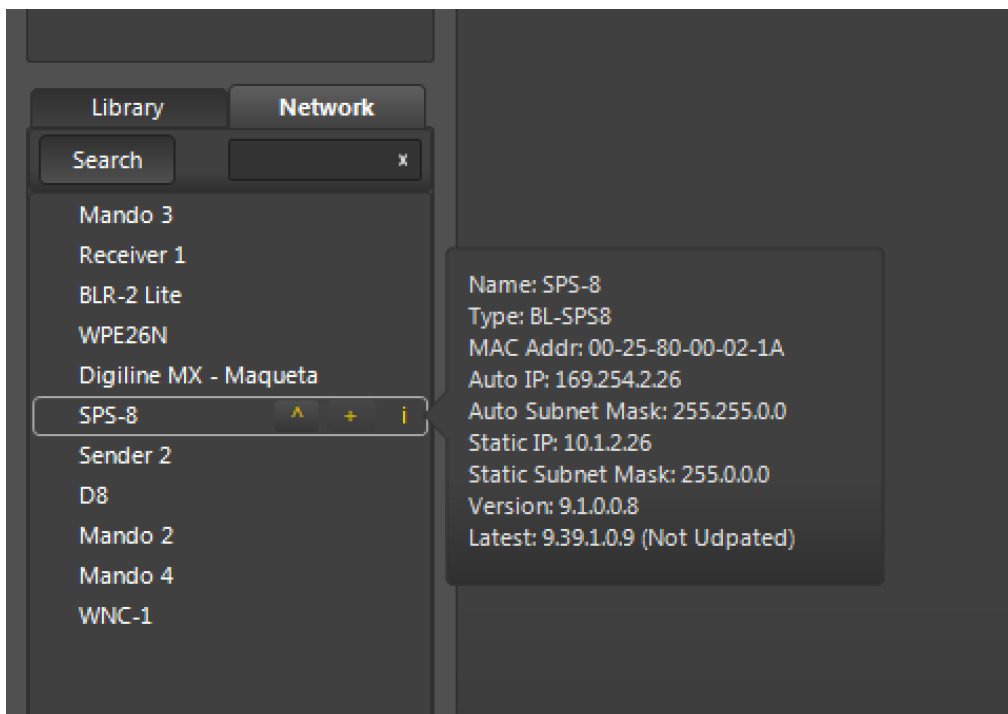
When users place the mouse over “SPS 8”, they can see up to 3 different icons:

- ^: It indicates that the device is not updated.
- +: Clicking on this icon, users will add the device to the Project. It has to be taken under consideration that if the device is not updated, it can't be added to the Project.



- i: When users place the mouse over this icon, it will be shown information about the device (fixed IP, dynamic IP, name, versión, etc.)

If you want to obtain information about a device, place the mouse over “i” icon of desired device.



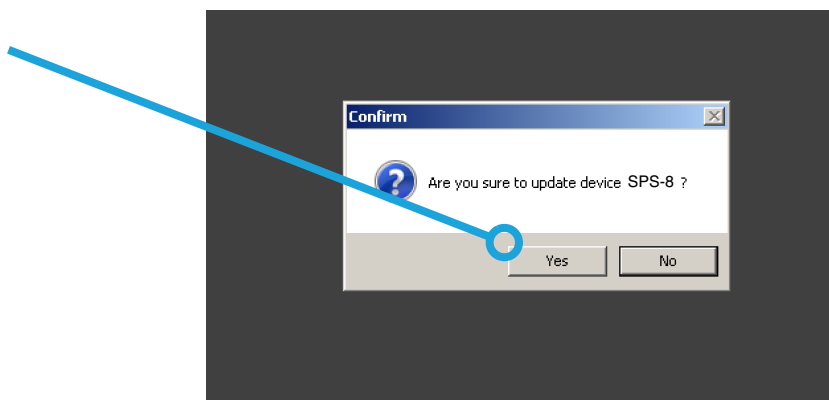
## Update of a SPS 8 in WorkCAD

After the installation of the BlueLine devices, it is recommended to update all of them to the latest version, with bug-fix and new functionalities. The steps to take in the update of a devices are:

- 1.Start WorkCAD and go to the “Network” tab, where we will find every BlueLine devices available on the network.
- 2.When moving the mouse over the name of the device, if the icon “^” is shown, we should update the device.

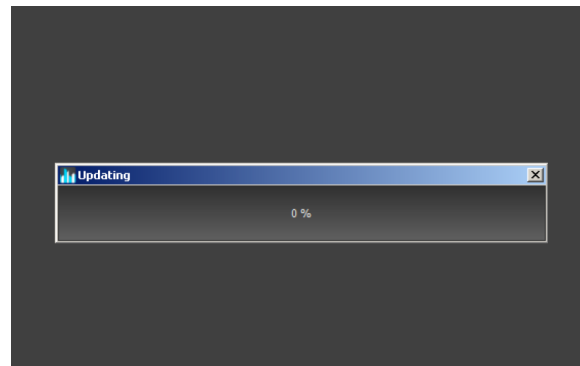


3. Click on the "^" icon (if shown) in order to update the device.

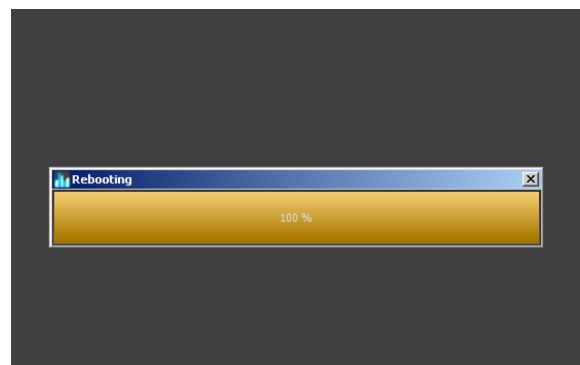


***If selecting "Yes" you see an error message, please check that the IP range of the PC and the WorkCAD is the same as the BlueLine device that you mean to update.***

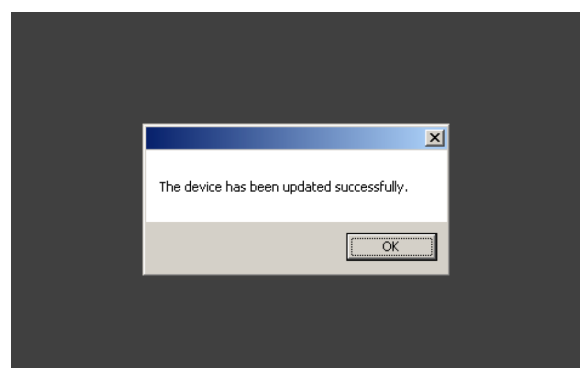
4. Click on “YES” and the update process will start.



5. During the update process, the progress bar will stop for a few seconds when the device is auto-resetting. Please, wait and do not disconnect the device until the process has ended.

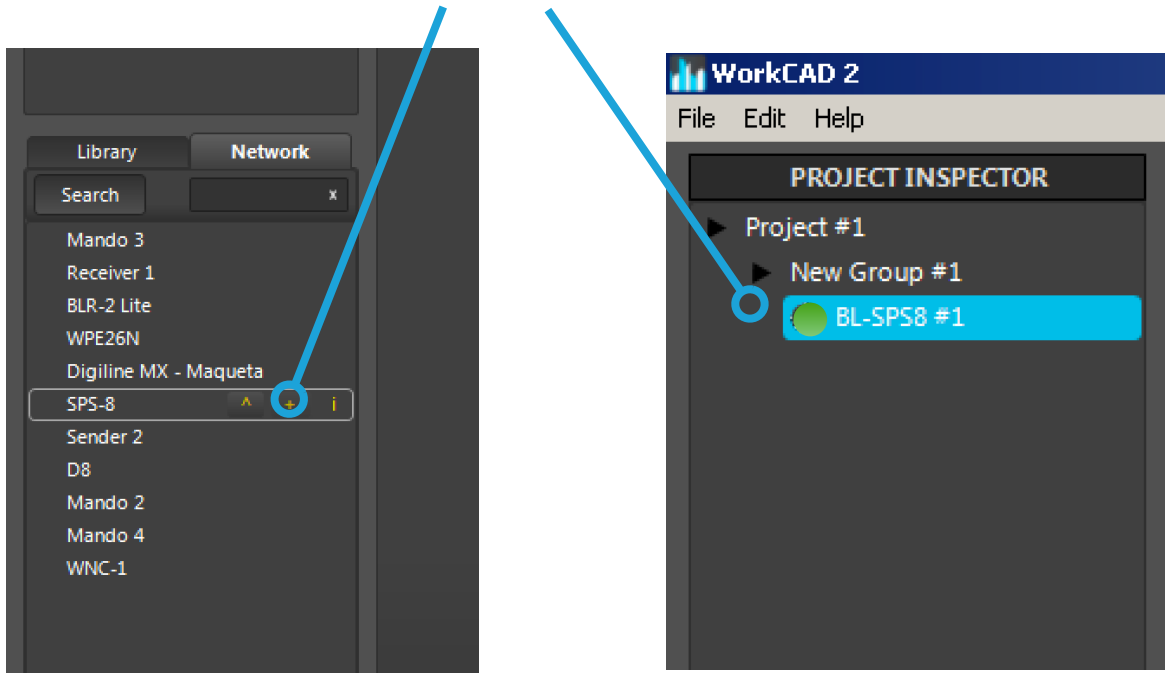


6. When the update is ended, WorkCAD will show a message informing that the process has been done successfully.

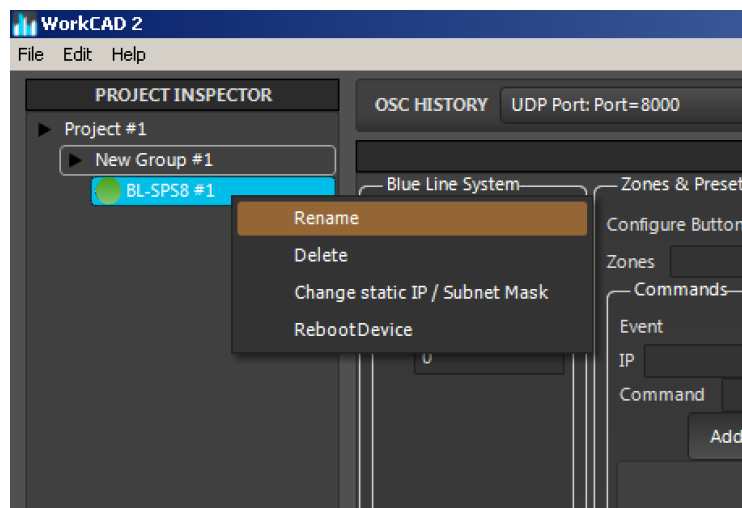


## Change the name of a SPS 8 with WorkCAD

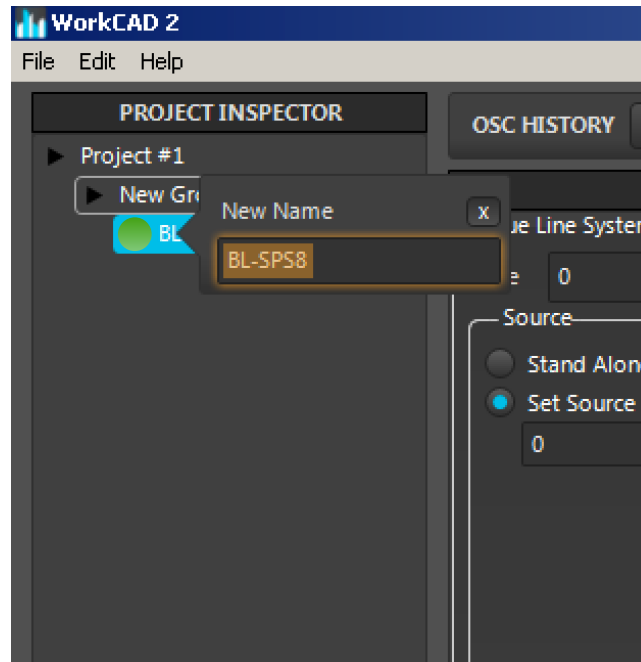
1-To change the name of a device it is necessary to add it to the Project (clicking on the “+” icon of the “Network” tab). The device will be add to the “Project Inspector” window of the project.



2-Right click on the name of the device. Select “Rename” from the list of option that will be shown.



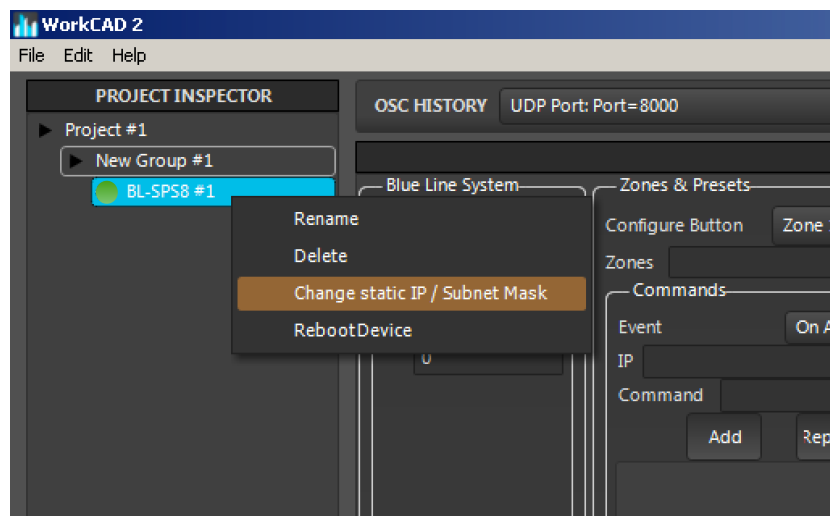
3-Give a new name to the device..



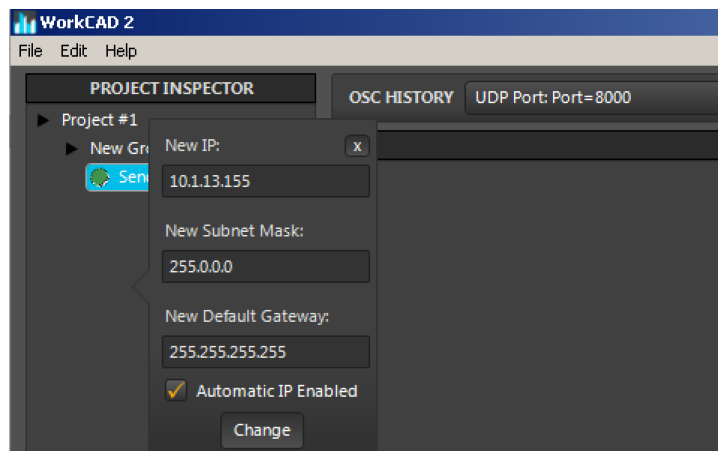
*One the name or IP address of a device has been changed, it is highly advisable to restart the device to correctly save the data.*

## Change the IP address of a SPS 8 with WorkCAD

1-Right click on the name of the device. Select "Change static IP" from the list of option that will be shown.



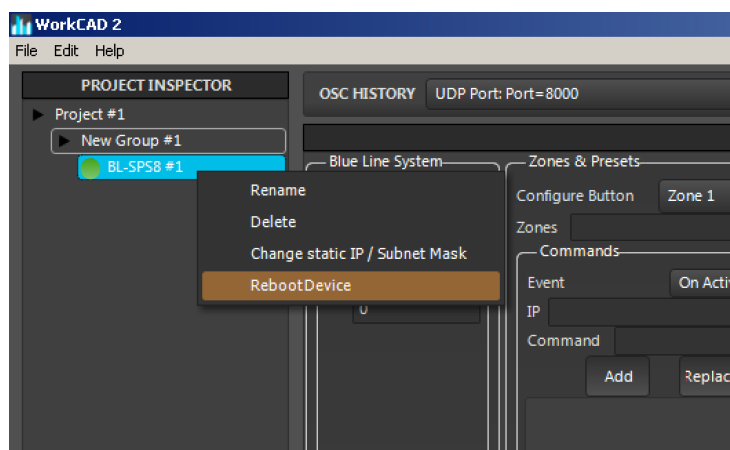
2- Give a new IP address to the device.



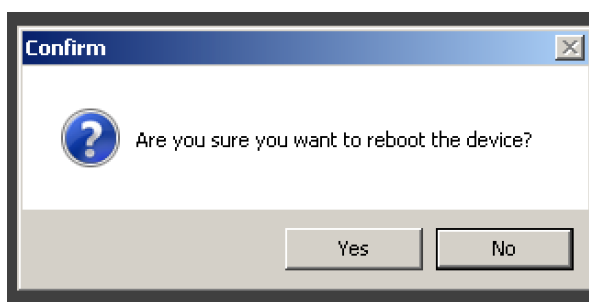
Un vez modificados el nombre o la dirección IP se aconseja el reinicio del dispositivo para almacenar correctamente los datos.

## Restart of a SPS 8 from WorkCAD

1- Right click on the name of the device. Select “RebootDevice” from the list of option that will be shown

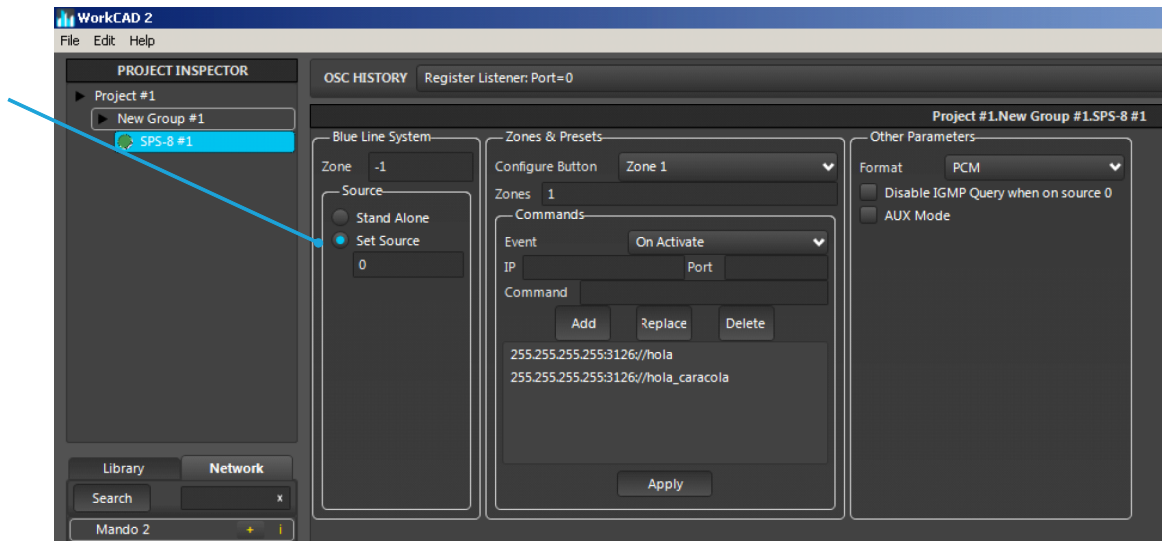


2-WorkCAD will ask users for a confirmation to restart the device.



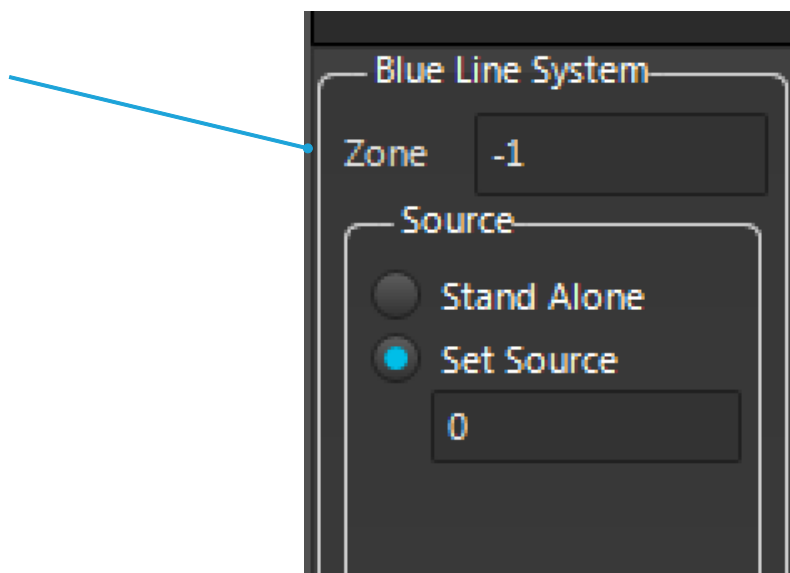
## Selection of the broadcast channel

From WorkCAD, we select the channel which is going to Broadcast the SPS 8. In the “BlueLine System” panel, we will choose the “Stand Alone” option to adjust the broadcast channel through the rotatory Switch of the SPS 8 or “Set Source” to adjust the broadcast channel by introducing a specific channel number



## Zone selection

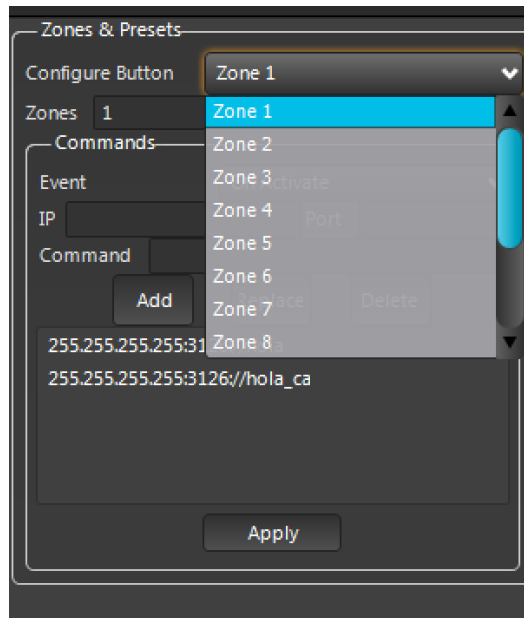
By default, every emitter of BlueLine Digital System belong to zone -1. If you want to change the emitter of the zone, keep in mind that zone 0 and zone 1 are taken for “Broadcast” and “Receivers”, respectively.



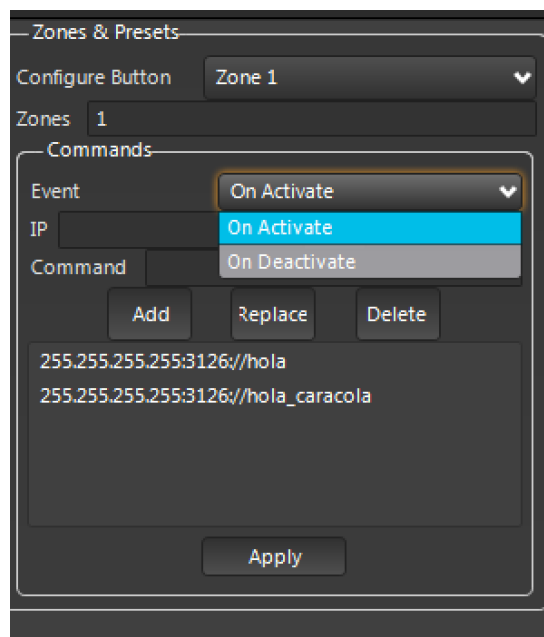
## Assignment of functions to each zone and preset selection button

From the menu “Zone & Presets” it is possible to set advanced configurations for each zone and preset button

1°-Click over the “Configure button” and select the button you want to assign an specific function to.

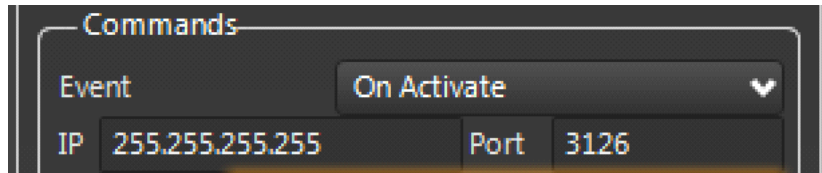


2°-We choose whether the command will be triggered on activate or deactivate



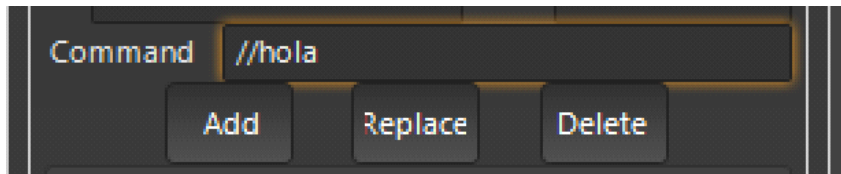


3°-Set the IP address of the device we want to send the message to. If we want to send a message to the whole network, we should introduce: 255.255.255.255.

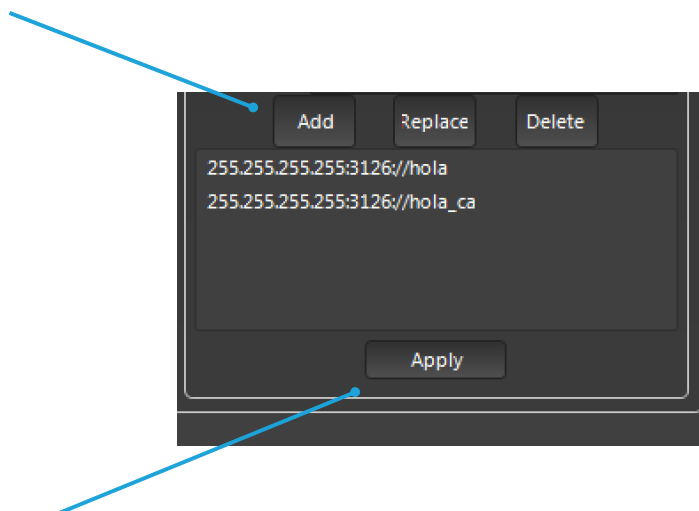


Then we need to specify the port number. By default, BlueLine Digital System set the port number 3126 for the control pack reception.

4°- Introduce the command (ASCII) that we want to send. Keep in mind that WorkCAD incorporates an “OSC to ASCII” tool in case you need to check any command.

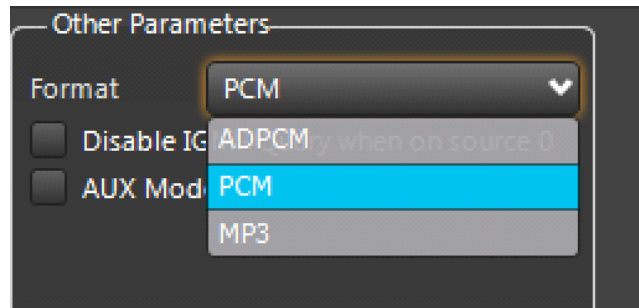


Once the command is written, click over “Add” and then “Apply” the changes.



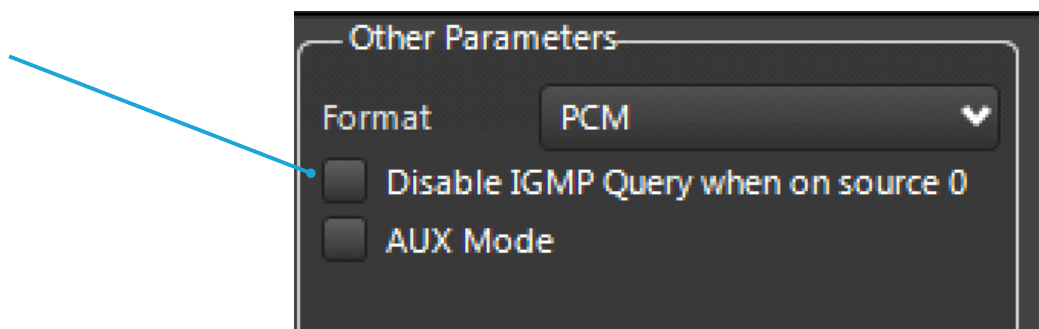
## Adjust the type of coding

Users can adjust the type of coding according to the requirements of the installation. For that, it is possible to choose PCM, ADPCM and MP3.



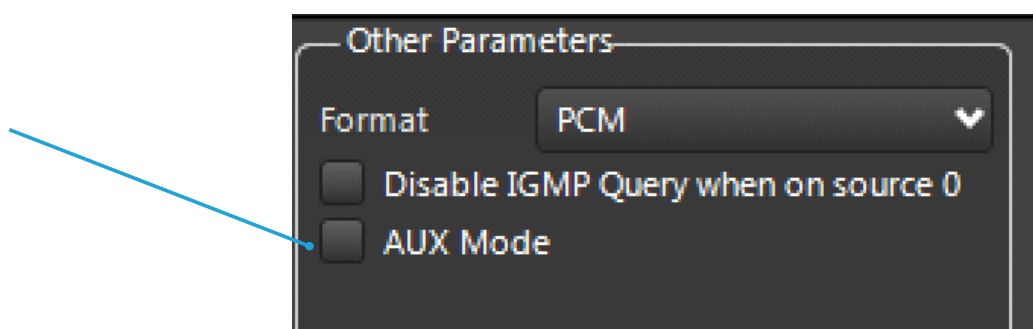
## Deactivate the function "IGMP querier"

By default, all the senders of BlueLine Digital System have the IGMP querier function. However, it is just activated when the sender is assigned to the broadcast channel 0. If the SPS 8 is assigned to channel 0 but you don't want to make it work with the querier function, this box must be checked.



## Activate the function "AUX Mode"

If the "AUX Mode" function is activate, the station will work then as sender, broadcasting seamless the source connected to the "AUX IN" input. For more information, please check the "AUX" button section of this presentation.



## Priority configuration

When an installation requires 2 or more SPS 8, it is necessary to set and assign priorities. For that, before the installation, each paging station should be connected to a PC and, through WorkCAD, configure independently the SPS 8.

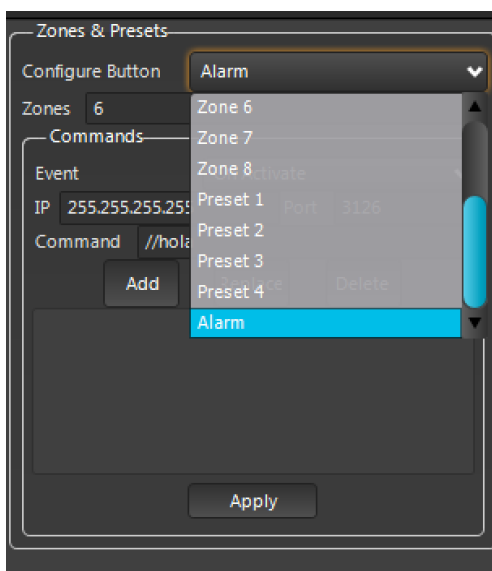
Just one SPS 8 can be set as “Master”, which means that every command triggered by it has priority over the rest of SPS 8 connected to the network.

## Alarm management

SPS 8 adds an alarm port through a circuit board and Euroblock type. By default, the alarm function hasn't any function assigned. If users want to assign a function, it is possible to do it using WorkCAD.

Users can set advanced functions when the activation of the alarm is done, thus beside triggering the channel priority, it is possible to trigger other commands to interact with doors, signals, sirens...

The command and function management to the alarm port is done through WorkCAD. It is possible to add these commands using the alarm configuration menu. The alarm works as the 4 preset buttons, with the exception that it is triggered through the alarm connection.





Designed by EQUIPSON, S.A.

Avda. El Saler, 14 - Pol. Ind. L'Alteró, 46460 - Silla (Valencia) Spain  
Tel. +34 96 121 63 01 Fax + 34 96 120 02 42

[www.workproaudio.com](http://www.workproaudio.com) [support@workproaudio.com](mailto:support@workproaudio.com)